



## 30 LODGE ROAD

HENDON, NW4 4DG

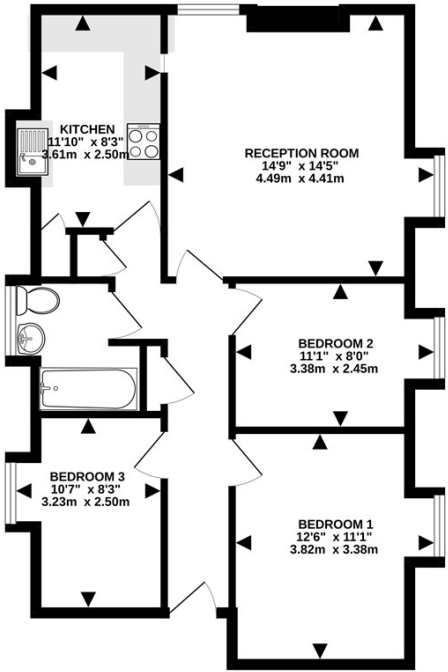
£2,400 PER MONTH

A Large Three Bedroom Flat, With Separate Reception Room, Gas Central Heating, Near Shops and Buses, Available 20th September 2025

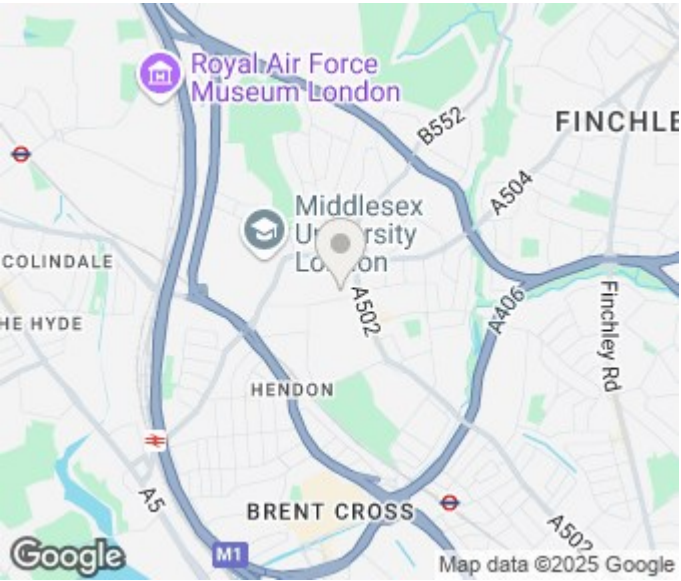


JAYSON  
RUSSELL

2ND FLOOR



Whilst every attempt has been made to ensure the accuracy of the floorplan contained here, measurements of doors, windows, rooms and any other items are approximate and no responsibility is taken for any error, omission or mis-statement. This plan is for illustrative purposes only and should be used as such by any prospective purchaser. The services, systems and appliances shown have not been tested and no guarantee as to their operability or efficiency can be given.  
Made with Metagor C2022



Energy Efficiency Rating		
	Current	Potential
Very energy efficient - lower running costs		
(92 plus) A		
(81-91) B		
(69-80) C		
(55-68) D		
(39-54) E		
(21-38) F		
(1-20) G		
Not energy efficient - higher running costs		
England & Wales	EU Directive 2002/91/EC	

Agents Note: Whilst every care has been taken to prepare these particulars, they are for guidance purposes only. All measurements are approximate and are for general guidance purposes only and whilst every care has been taken to ensure their accuracy, they should not be relied upon and potential buyers/tenants are advised to recheck the measurements

Hendon Lettings  
20 Parson Street  
London  
NW4 1QB

0208 202 1111  
info@jaysonrussell.com  
www.jaysonrussell.com

